



Contents lists available at ScienceDirect

Thrombosis Research

journal homepage: [www.elsevier.com/locate/thromres](http://www.elsevier.com/locate/thromres)

## Regular Article

Shear-induced platelet receptor shedding by non-physiological high shear stress with short exposure time: Glycoprotein Ib $\alpha$  and glycoprotein VI<sup>☆</sup>Zengsheng Chen<sup>a,1</sup>, Nandan K. Mondal<sup>a,1</sup>, Jun Ding<sup>a,b</sup>, Jingya Gao<sup>c</sup>, Bartley P. Griffith<sup>a</sup>, Zhongjun J. Wu<sup>a,\*</sup><sup>a</sup> Artificial Organs Laboratory, Department of Surgery, University of Maryland School of Medicine, Baltimore, MD 21201, USA<sup>b</sup> Department of Mechanical Engineering, University of Maryland, Baltimore County, Baltimore, MD 21250, USA<sup>c</sup> Department of Chemistry and Biochemistry, School of Science, Siena College, Loudonville, NY 12211, USA

## ARTICLE INFO

## Article history:

Received 30 September 2014

Received in revised form 1 January 2015

Accepted 30 January 2015

Available online xxxx

## Keywords:

Shear stress

Platelet receptor shedding

Platelet dysfunction

Platelet aggregation

Blood contacting medical devices

## ABSTRACT

**Introduction:** The structural integrity of platelet receptors is essential for platelets to function normally in hemostasis and thrombosis in response to physiological and pathological stimuli. The aim of this study was to examine the shedding of two key platelet receptors, glycoprotein (GP) Ib $\alpha$  and GPVI, after exposed to the non-physiological high shear stress environment which commonly exists in blood contacting medical devices and stenotic blood vessels.

**Materials and Methods:** In this *in vitro* experiment, we exposed healthy donor blood in our specially designed blood shearing device to three high shear stress levels (150, 225, 300 Pa) in combination with two short exposure time conditions (0.05 and 0.5 sec.). The expression and shedding of platelet GPIb $\alpha$  and GPVI receptors in the sheared blood samples were characterized using flow cytometry. The ability of platelet aggregation induced by ristocetin and collagen related to GPIb $\alpha$  and GPVI in the sheared blood samples, respectively, was evaluated by aggregometry.

**Results and Conclusions:** Compared to the normal blood, the surface expression of platelet GPIb $\alpha$  and GPVI in the sheared blood significantly decreased with increasing shear stress and exposure time. Moreover, the platelet aggregation induced by ristocetin and collagen reduced remarkably in a similar fashion. In summary non-physiological high shear stresses with short exposure time can induce shedding of platelet GPIb $\alpha$  and GPVI receptors, which may lead platelet dysfunction and influence the coagulation system. This study may provide a mechanistic insight into the platelet dysfunction and associated bleeding complication in patients supported by certain blood contacting medical devices.

© 2015 Elsevier Ltd. All rights reserved.

## Introduction

Cardiovascular disease is the largest cause of global death. Heart failure (HF) affects more than 5 million Americans and contributed to 274,601 deaths in 2009. In spite of medical advances near 50% diagnosed HF patients will succumb by 5 years. The annual expenditure on HF in the US is daunting \$34.4 billion [1]. In order to treat the cardiovascular disease, significant progress in the development and use of prosthetic cardiovascular devices has been made in the past decades. Ventricular assist devices (VADs) are one of the cardiovascular devices and have emerged as a standard therapy for patients with advanced HF waiting for heart transplant or a bridge to myocardial recovery.

Recent advance has enabled VADs to be used as a permanent therapy for life extension in HF patients who are not heart transplant candidates [2–4]. Unfortunately, device-related thrombotic and bleeding complications remain the major obstacles for this technology to be accepted widely for improvement of quality of life in millions of HF patient [5,6]. Many investigations have been carried to understand device-induced platelet activation and coagulation system alteration associated with the use of VAD in patients, which are closely related to thrombotic events [7–9]. Because of thrombotic risk, patients implanted with VADs take the anti-coagulated drugs, which may tilt hemostatic balance towards bleeding in these patients [10,11]. Two major types of VADs, pulsatile-flow and continuous-flow (CF), have been used in clinics [12]. It has been reported that patients with CF-VADs experienced higher rate of bleeding than those with pulsatile-flow devices although anticoagulation was not different among these two groups of patients. We believe that the increased bleeding risk in patients supported with CF-VADs is associated with the unique high shear stress environment in contemporarily available CF-VADs which has been reported in the literature when compared to pulsatile VADs [10,13–20].

Platelets are anucleate blood cells that play a critical role in hemostasis. At the site of vascular injury, the subendothelial layer of matrix

<sup>☆</sup> Source of Funding: The described research was partially sponsored by the National Institutes of Health (Grant R01 HL088100).

\* Corresponding author. Current address: Department of Cardiovascular and Thoracic Surgery, University of Louisville School of Medicine; Cardiovascular Innovation Institute, Room 410, 302 E. Muhammad Ali Blvd, Louisville, KY-40202, USA. Tel.: +1 502-852-1351; fax: +1 502-852-5848.

E-mail address: [zhongjun.wu@louisville.edu](mailto:zhongjun.wu@louisville.edu) (Z.J. Wu).

<sup>1</sup> Both the authors contributed equally to this work.

proteins, specifically Von Willebrand factor (vWF) and collagen, are exposed to blood. The exposed vWF and collagen activate the platelet adhesion receptors glycoprotein Ib $\alpha$  (GPIb $\alpha$ ), which belongs to the GPIb-IX-V complex with vWF binding, and glycoprotein VI (GPVI), which is a crucial platelet receptor for collagen binding [21,22]. Both the activation pathways trigger intracellular signaling cascades leading to final platelet aggregation to form a primary hemostatic plug to stop bleeding. The shedding of these two key receptors would lead the platelet dysfunction and affect hemostasis [23–26]. Receptor shedding is a mechanism for irreversible removal of transmembrane cell surface receptors by proteolysis of the receptor at a position near the extracellular surface of the plasma membrane. This process generates a soluble ectodomain fragment and a membrane-associated remnant fragment, and is distinct from loss of receptor surface expression by internalization or microparticle release or secretion of alternatively spliced soluble forms of receptors lacking a transmembrane domain. Platelet receptor shedding provides a mechanism for down regulating surface expression resulting in loss of ligand binding, decreasing the surface density affecting receptor cross linking and signaling, and generation of proteolytic fragments that may be functional and/or provide platelet-specific biomarkers.

Previous investigations had shown that platelet GPIb $\alpha$  and GPVI could be shed by the shear stress with very long exposure times [27,28]. The cone-plate viscometers were used to in these studies to expose platelets to shear stress for extended duration. The levels of shear stresses were relatively low and exposure time was long. The relevance of the results from these studies to CF-VADs is limited. In some regions of a typical CF-VAD, blood would experience shear stresses higher than 100 Pa (1000 dyne/cm<sup>2</sup>) with very short exposure time less than 1 sec [16,29]. No studies have been conducted to investigate the impact of the higher shear stress and shorter exposure time conditions in these ranges on the shedding of the two functional platelet receptors GPIb $\alpha$  and GPVI, and their aggregation potential upon stimulation by ristocetin and collagen.

We believe that shear induced hemostatic dysfunction imparted by the non-physiological high mechanical shear of high speed rotary CF-VADs, especially the shedding of platelet receptors (GPIb $\alpha$  and GPVI) may be responsible for the morbid bleeding, which is the most common postoperative complication after VADs implantation and a leading manifestation of the disordered coagulation [30–32]. In order to test our hypothesis, an experiment was designed to investigate the shedding of GPIb $\alpha$  and GPVI under high shear stress and short exposure time conditions. During the present study, the blood draw from the donor would be shed by a novel blood-shearing device which could create flow conditions with high shear stress and short exposure time.

## Materials and methods

### Blood-shearing device

The Blood-shearing device used in this experiment was an axial flow-through Couette device adapted from the adult Jarvik 2000 blood pump (Jarvik Heart, Inc., New York, NY, USA). In this device, the shape

of the inner rotor is a spindle which is supported by a pair of tiny pin-bearings and could rotate between 8000 and 12 000 rpm and there is a narrow gap with a uniform width of 100  $\mu$ m between the inner rotor and the outer housing (shown in Fig. 1). The detail design of this device could be found in the reference [33]. For a fluid with typical viscosity of 0.0036 Pa  $\cdot$  s, a uniform shear region with the corresponding shear stress between 117 and 338 Pa could be created using this device. As shown in Fig. 1, during the experiment, a syringe pump (PHD 2000, Harvard Apparatus, Holliston, MA) was connected with the blood-shearing device and the whole blood was pressure-driven to pass through the narrow gap in the axial direction, which could be used to control the shearing exposure time of blood. Therefore, the high shear stress and short exposure time could be created by adjusting the spindle rotor speed and the axial flow rate. Also, it should be mentioned that, the shear stress in the other region of this device might had some influence on blood, but it could be negligible. Our early computational fluid dynamics analysis showed that the shear stress in the other region was much smaller than that in the narrow gap region [33].

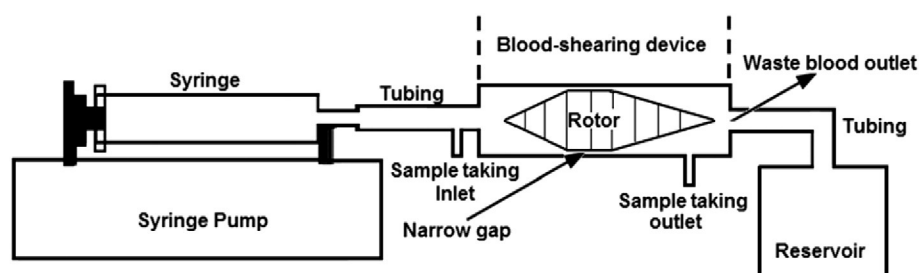
### Experimental procedure

Nine healthy human blood donors were recruited to participate in the present study. All the donors gave informed consent and did not take aspirin or other platelet active medication 10 days prior to the blood donation. The blood collection was carried out in accordance to the protocol approved by the Institutional Review Board of the University of Maryland, Baltimore. Fresh blood drawn from these donors mixed with anticoagulant acid citrate dextrose (ACD-A) with the volume ratio of 9 to 1.

Before each experiment, the viscosity of the blood preparation was measured by semi-micro viscometers (Cannon Instrument Company, State College, PA). The rotational speed of spindle rotor and the axial flow rate were decided by the expected shear stresses and exposure times respectively [33]. During the experiment, a baseline blood sample was collected at the inlet of the shearing device and used as the control sample for comparison with the sheared blood samples. Three levels of high shear stresses (150, 225, 300 Pa) and two different short exposure times (0.05 and 0.5 sec.) were chosen in the present study [19,34]. For each condition with a combination of shear stress and exposure time, the sheared blood sample was collected from the sample outlet of the device. For each condition, the blood shearing experiments would be repeated for nine times. After all the samples were collected, the shedding of platelet receptors GPIb $\alpha$  and GPVI of the baseline and sheared blood samples was measured with flow cytometry. In parallel, the ristocetin and collagen induced platelet aggregation of these blood samples were quantified with whole blood aggregometry.

### Flow cytometric assays of shedding of platelet GPIb $\alpha$ and GPVI receptors

The shedding of platelet receptors GPIb $\alpha$  and GPVI in the blood samples after exposed to the non-physiological shear stress conditions was



**Fig. 1.** The sketch of Blood shearing system; it is consist of syring pump used to control the flow rate, syringe, tubing, blood shearing device including 100  $\mu$ m narrow gap between the inner rotor and the outer housing, blood sample taking inlet and outlet, waste blood outlet and reservoir.

analyzed by flow cytometry. Phycoerythrin (PE) conjugated anti-CD41 antibody (BioLegend, San Diego, CA), Fluorescein isothiocyanate (FITC) conjugated anti-CD42b antibody (BioLegend, San Diego, CA) and Fluorescein isothiocyanate (FITC) conjugated IgG1K antibody (BioLegend, San Diego, CA) were used to identify the platelet population, to determine the level of expression of platelet receptor GPIIb $\alpha$  and to serve the negative control for expression of platelet receptor GPIIb $\alpha$ , respectively. 5  $\mu$ l whole blood samples were incubated with 25  $\mu$ l of 10 mM HEPES buffer mixed with 10  $\mu$ l anti-CD41 antibody and 10  $\mu$ l anti-CD42b antibody for 30 min at room temperature in dark. In parallel, a 5  $\mu$ l whole blood sample was incubated with 25  $\mu$ l HEPES buffer mixed with 10  $\mu$ l anti-CD41 antibody and 10  $\mu$ l IgG1K antibody and used as the negative control.

For the GPVI shedding, PE conjugated anti-CD 41 antibody (BioLegend, San Diego, CA), eFluor 660 conjugated anti-Human Glycoprotein VI (eBioscience, San Diego, CA) and eFluor 660 conjugated Mouse IgG1K Isotype Control (eBioscience, San Diego, CA) were used to identify the platelets, to determine the level of expression of platelet receptor GPVI and to serve the negative control, respectively. 5  $\mu$ l whole blood samples were incubated with 25  $\mu$ l of 10 mM HEPES buffer mixed with 5  $\mu$ l anti-CD41 antibody and 5  $\mu$ l anti-Glycoprotein VI antibody for 30 min at room temperature in dark. A 5  $\mu$ l whole blood sample was incubated with 25  $\mu$ l HEPES buffer mixed with 5  $\mu$ l anti-CD41 antibody and 5  $\mu$ l Mouse IgG1K Isotype antibody and used to be the negative control.

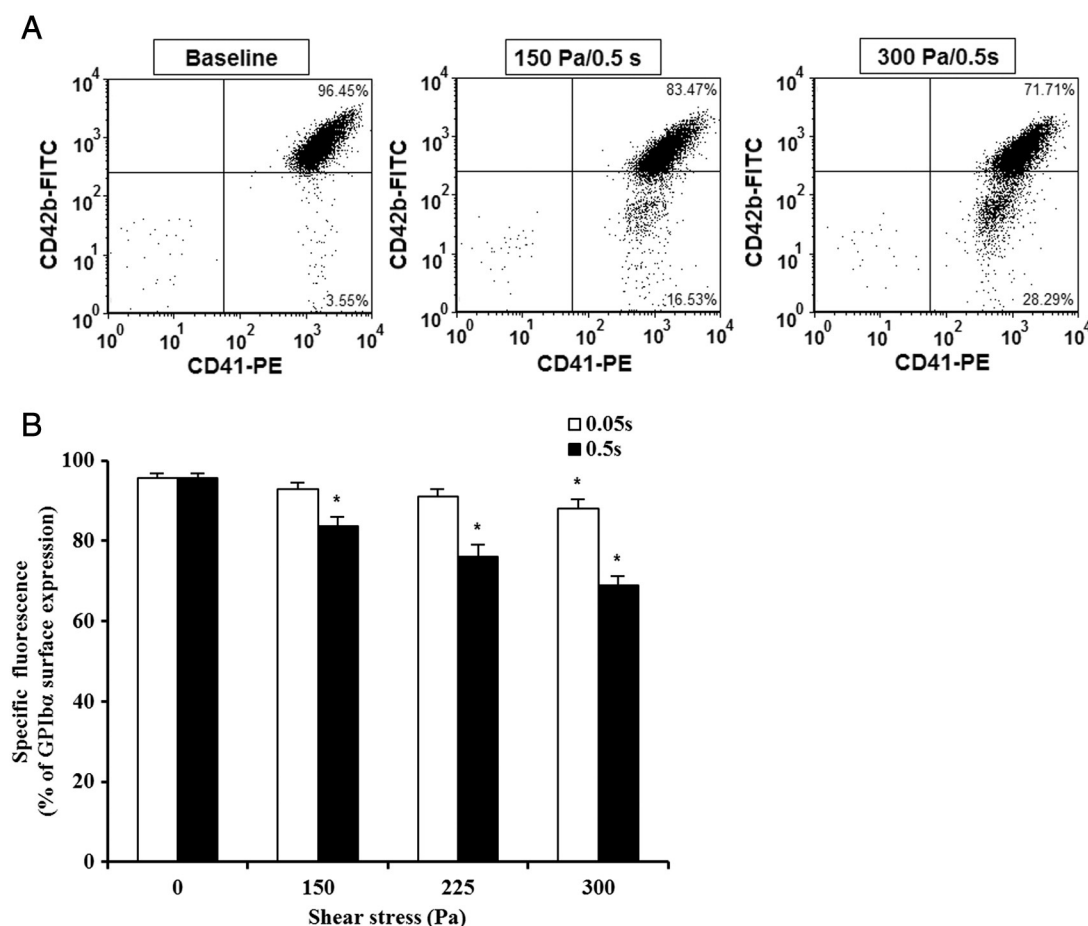
After the above labeling steps, 1 ml of 1% paraformaldehyde (PFA) in PBS was used to fix the samples for 30 min at 4 degree in dark. The flow cytometric data collection of the blood samples was performed with a

four color flow cytometer (FACS Calibur, BD Bioscience, San Jose, CA). The data were analyzed offline using the software FCS Express 4.0 (De Novo Software, Los Angeles, CA).

#### Platelet aggregation test

If the platelet receptors (GPIIb $\alpha$  and GPVI) were shed after being exposed to the non-physiological high shear stresses generated by the blood shearing device, the platelet aggregation induced by the agonists stimulating platelet GPIIb $\alpha$  and GPVI would decrease. In order to test this hypothesis, the platelet aggregation test of the baseline and sheared blood samples was performed using an aggregometer (Chrono-Log, Havertown, PA) by using ristocetin and collagen as the agonists. The ristocetin induces the platelet aggregation by causing VWF to bind with the platelet receptor GPIIb $\alpha$ . The collagen induces the platelet aggregation by binding with the platelet receptor GPVI to induce platelet activation.

According to the manufacturer's instruction, 0.5 ml whole blood sample was added into the preheated polystyrene cuvette containing 0.5 ml 0.9% saline and a stir bar. The 1 ml mixed blood sample was heated in the aggregometer and stirred at a stirring rate of 1200 rpm. Then 8  $\mu$ l ristocetin with the final concentration of 1 mg/ml or 5  $\mu$ l collagen with the final concentration of 4  $\mu$ g/ml was added into the mixed blood sample. After adding the agonists, the platelets were stimulated to adhere on two electrodes which caused the impedance between the electrodes to increase. Once the agonist reagent was added, the time course of the impedance was recorded for 6 minutes. The integral of the impedance curve (area under the impedance curve, AUC) which



**Fig. 2. A:** The flow cytometry dot plots of comparing of platelet receptor GPIIb $\alpha$  surface expression among base sample and two sheared samples (150 Pa/0.5 s and 300 Pa/0.5 s). The percent of platelet receptor GPIIb $\alpha$  surface expression is indicated by both positive antibodies of FITC conjugated anti-CD42b (CD42b-FITC) and PE conjugated anti-CD41 (CD41-PE). **B:** The average comparing of the percentage of GPIIb $\alpha$  surface expression in platelet between base unsheared blood samples (0 Pa) and sheared blood samples under three levels of high shear stress (150, 225, 300 Pa) for two durations (0.05 and 0.5 sec.) (n = 9).

was the overall metric for platelet aggregation was used to represent the agonist induced platelet aggregation in this study.

#### Statistical analysis

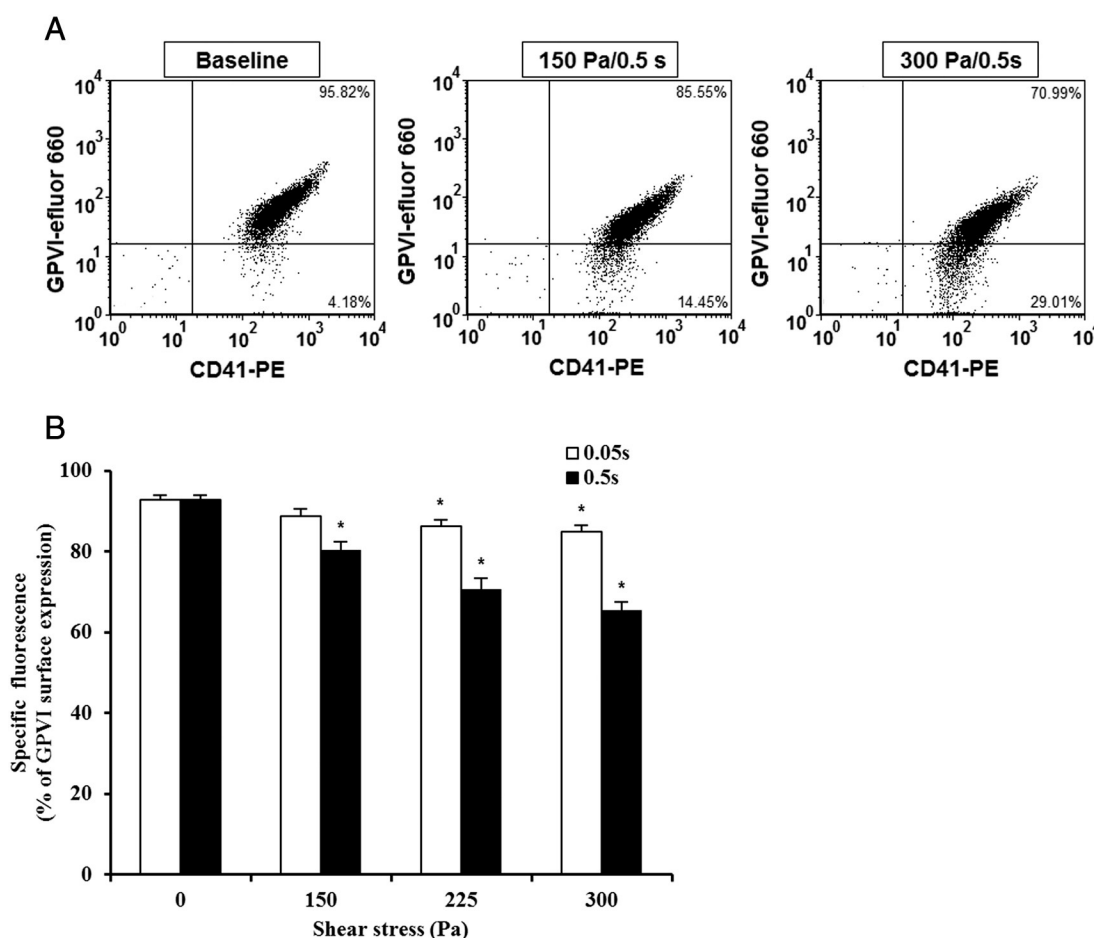
The data are presented as mean  $\pm$  SE (standard Error) and statistically analyzed using SPSS statistical software (Statistical Package for Social Sciences for windows, release 18.0; SPSS Inc., Chicago, IL, USA). Statistical differences were determined by using Student's t-test. Statistical significance was assigned at  $p < 0.05$ .

#### Results

Fig. 2A and B show typical flow cytometry dot plots of platelet GPIIb/IIIa and CD-41 expression in the baseline blood and two sheared blood samples and the quantification of reduced platelet GPIIb/IIIa surface expression by the non-physiological shear stresses. The platelets in the blood samples were identified by the PE conjugated anti-CD41 antibody and the level of the surface expression of GPIIb/IIIa on each platelet was indicated by fluorescent intensity of FITC (conjugated anti-CD42b). Fig. 2A clearly shows the increase in the percentage of platelets (CD-41 positive) with reduced CD-42b expression in the two sheared blood samples compared with that in the baseline blood sample, indicating the shear-induced shedding of the platelet receptor GPIIb/IIIa after subjected to the non-physiological shear stress. Fig. 2B exhibits the levels of the shear-induced shedding of the platelet receptor GPIIb/IIIa in the normal blood and the six blood samples sheared by the three different levels of high

shear stress (150, 225, 300 Pa) for the two exposure times (0.05 and 0.5 sec.). As indicated in these figures, the shedding of the platelet receptor GPIIb/IIIa in the blood sample sheared by the shear stress levels of 150 Pa and 225 Pa for the exposure time of 0.05 sec increased slightly, but not significantly compared with the baseline blood. However when the shear stress level increased to 300 Pa, the shedding of the platelet receptor GPIIb/IIIa for the exposure time of 0.05 sec became significant ( $P < 0.05$ ). With the increase in the exposure time to 0.5 sec, the shedding of the platelet receptor GPIIb/IIIa in the sheared blood samples was significant for the three levels of shear stresses when compared with the baseline blood. Overall, the shedding of the platelet receptor GPIIb/IIIa in the sheared blood samples increased with increasing shear stress and exposure time.

Fig. 3A and B show typical flow cytometry dot plots of platelet GPIIb/IIIa and CD-41 expression in the baseline and two sheared blood samples and the quantification of the reduced platelet GPIIb/IIIa surface expression by the non-physiological shear stresses. As shown in the flow cytometry dot plots (Fig. 3A), the percentage of platelets with reduced GPIIb/IIIa surface expression, as indicated by fluorescent intensity of eFluor 660 (conjugated anti-GPIIb/IIIa), increased with increasing the level of shear stress. Fig. 3B exhibits the levels of the shear-induced shedding of the platelet receptor GPIIb/IIIa in the normal blood and the six blood samples sheared by the three levels of shear stress (150, 225, 300 Pa) for the two exposure times (0.05 and 0.5 sec.). In general, the shedding of the platelet receptor GPIIb/IIIa in the sheared blood samples increased with increasing shear stress and exposure time. The percentage of platelets with reduced GPIIb/IIIa surface expression increased significantly



**Fig. 3. A:** The flow cytometry dot plots of comparing of platelet receptor GPIIb/IIIa surface expression among base sample and two sheared samples (150 Pa/0.5 sec. and 300 Pa/0.5 sec.). The percent of platelet receptor GPIIb/IIIa surface expression is indicated by both positive antibodies of eFluor 660 conjugated anti-Human Glycoprotein VI (GPVI-eFluor 660) and PE conjugated anti-CD41 (CD41-PE). **B:** The average comparing of the percentage of GPIIb/IIIa surface expression in platelet between base unshaded blood samples (0 Pa) and sheared blood samples under three levels of high shear stress (150, 225, 300 Pa) for two durations (0.05 and 0.5 sec.) ( $n = 9$ ).

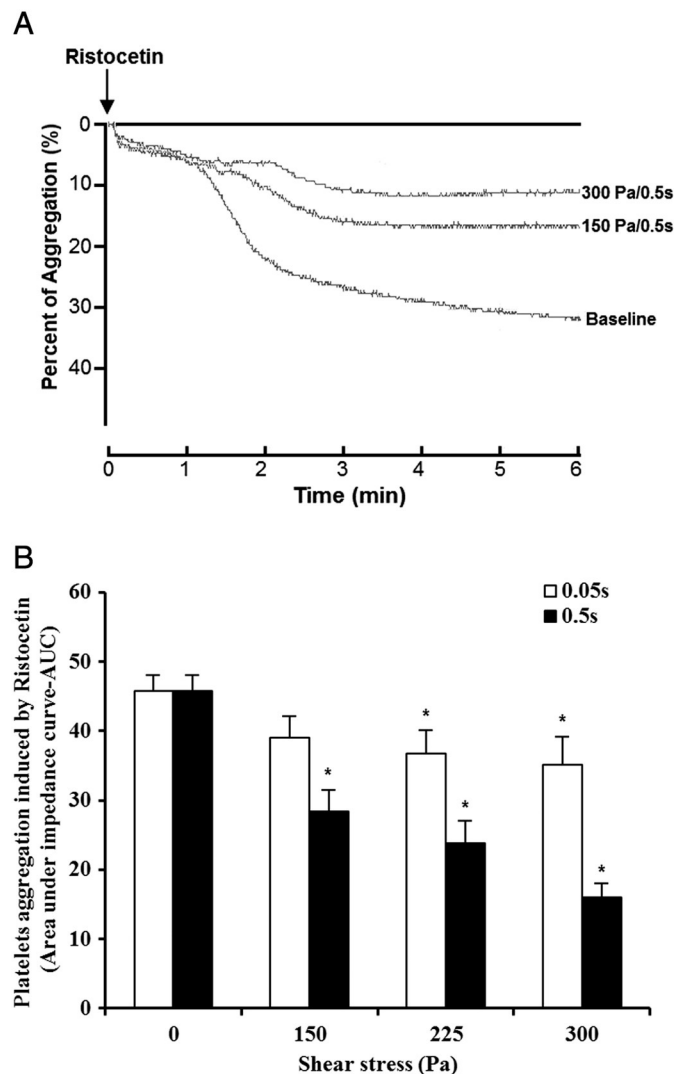


( $P < 0.05$ ) in all the sheared blood samples except one sheared blood sample by 150 Pa for the exposure time of 0.05 sec compared with that of the normal blood.

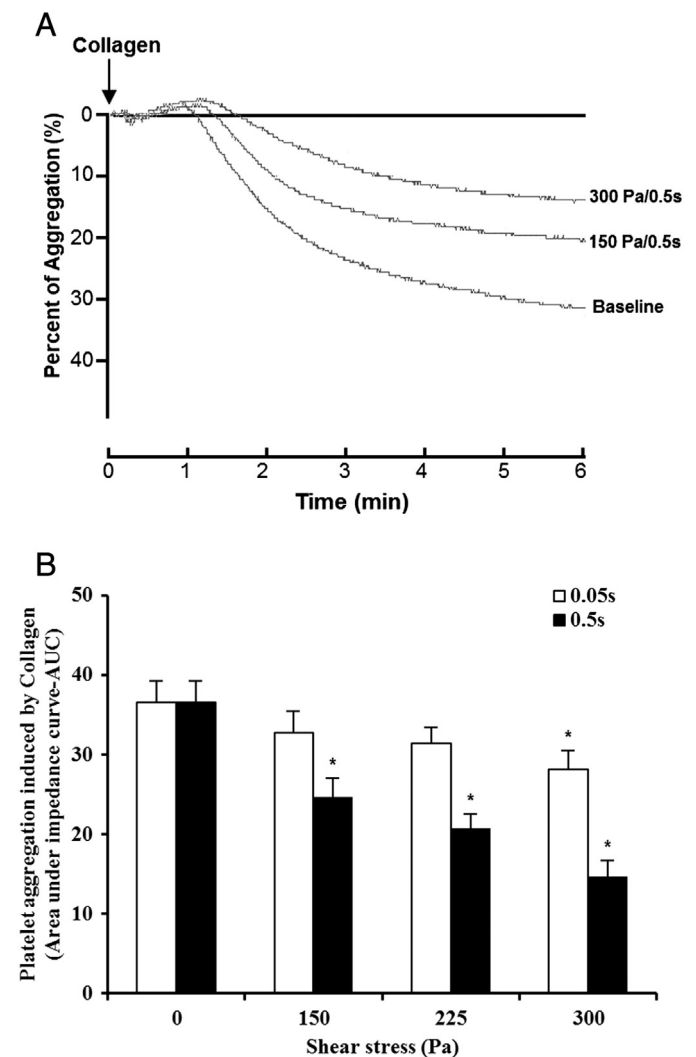
To further confirm the shear-induced shedding of the platelet receptor GPIIb $\alpha$  and GPVI, ristocetin and collagen were added to the sheared blood samples to evaluate their platelet receptor GPIIb $\alpha$  and GPVI associated aggregation ability, respectively. Fig. 4A and B show typical traces of ristocetin-induced aggregation of the baseline and two sheared blood samples and the quantitative comparison of the ristocetin-induced aggregation among the baseline blood and the six blood samples sheared by the three levels of shear stress for the exposure times. Fig. 4A clearly shows that the non-physiological shear stress caused reduction in the ristocetin-induced aggregation. The degree of the reduction increased with exposure time. Since the platelet aggregation induced by ristocetin is via stimulating the binding of platelet receptor GPIIb $\alpha$  with vWF, the shear-induced shedding of the platelet receptor GPIIb $\alpha$  should be the reason for the reduction of the ristocetin-induced platelet aggregation under high shear stress and short exposure time conditions. Fig. 4B show the levels of the shear-induced reduction in the vWF mediated

platelet GPIIb $\alpha$  associated aggregation of the baseline and the six blood samples sheared by the three levels of shear stress for the two exposure times. For the exposure time of 0.05 sec, the reduction of the platelet GPIIb $\alpha$  associated aggregation of the sheared blood samples by the shear stress level of 150 Pa was not significant compared to the normal blood. However, the reduction in the platelet GPIIb $\alpha$  associated aggregation became significant with increasing the shear stress level to 225 and 300 Pa ( $P < 0.05$ ). When the exposure time was increased to 0.5 sec, the platelet GPIIb $\alpha$  associated aggregation of the blood samples sheared by the three levels of shear stress reduced significantly ( $P < 0.05$ ). We noticed that there was a slight decrease in the platelet counts with increasing the level of shear stress and exposure time, but not statistically significant. The slight reduction of platelet counts in samples should be expected because we found the aggregation between platelets and monocytes increased with increasing shear stress and exposure time in our previous study [35].

Fig. 5A and B show typical traces of the collagen-induced aggregation of the baseline blood and two sheared blood samples and the quantitative comparison of the collagen-induced aggregation among the



**Fig. 4. A:** The changing of impedance curve (aggregation curve) of the platelets aggregation induced by ristocetin among base sample and two sheared samples (150 Pa/0.5 s, 300 Pa/0.5 s). The platelet aggregation is indicated by area under the impedance curve. The time course of the platelets aggregation curve changing was recorded for 6 minutes. **B:** The average comparing of platelet aggregation induced by ristocetin between base unsheared blood samples (0 Pa) and sheared blood samples under three levels of high shear stress (150, 225, 300 Pa) for two durations (0.05 and 0.5 sec.) (n = 9). The platelet aggregation induced by ristocetin in y-axis is indicated by area under the impedance curve.



**Fig. 5. A:** The changing of impedance curve (aggregation curve) of the platelets aggregation induced by collagen among base sample and two sheared samples (150 Pa/0.5 s, 300 Pa/0.5 s). The platelet aggregation is indicated by area under the impedance curve. The time course of the platelets aggregation curve changing was recorded for 6 minutes. **B:** The average comparing of platelet aggregation induced by collagen between base unsheared blood samples (0 Pa) and sheared blood samples under three levels of high shear stress (150, 225, 300 Pa) for two durations (0.05 and 0.5 sec.) (n = 9). The platelet aggregation induced by collagen in y-axis is indicated by area under the impedance curve.

baseline blood and the six blood samples sheared by the three levels of shear stress for the exposure times. Fig. 5A shows that the non-physiological shear stress causes reduction in the collagen-induced aggregation. The degree of the reduction increased with exposure time. Since the platelet aggregation induced by collagen is via stimulating the binding of platelet receptor GPVI and platelet activation, the shear-induced shedding of the platelet receptor GPVI should be the reason for the reduction of the collagen-induced platelet aggregation under high shear stress and short exposure time conditions. Fig. 5B shows the levels of the shear-induced reduction in the collagen mediated platelet GPVI associated aggregation of the baseline and the six blood samples sheared by the three levels of shear stress for the two exposure times. For the exposure time of 0.05 sec, the collagen-induced platelet aggregation decreased with increasing the shear stress from 150 to 225 Pa, but did become significant until the shear stress level reached to 300 Pa ( $P < 0.05$ ) compared to that of the normal blood. For the exposure time of 0.5 sec, the three levels of shear stress caused significant reduction in the collagen-induced platelet aggregation ( $P < 0.05$ ).

## Discussion

The non-physiological high shear stress often exists in blood contacting medical devices. In particular, the shear stress level above 100 Pa has been found in some region within blood pumping devices, such as the blade region [16,29]. However, the duration for the blood exposed to high shear stress was very short and less than one sec. Shear-induced platelet activation and aggregation have been the major concerns for use of these devices in clinical setting. Thus a complex anticoagulant drug regimen is often prescribed to mitigate thrombotic risk. The current anticoagulation treatment may incur vulnerability to bleeding and hemorrhage which are the most common postoperative complication associated with circulatory assist devices, ECMO and heart valves and cardiopulmonary bypass. Until recently, bleeding associated with blood contacting medical devices has been often attributed to the anticoagulation treatment. However, several recent reports suggested that bleeding associated one type of device was higher than others [10], for example, patients with CF-VADs experienced higher rate of bleeding than those with pulsatile-flow devices although anticoagulation was not different among these two groups of patients. Thus we believe that the underlying fluid mechanic shear stress might contribute to the increased bleeding.

In present study, human blood was subjected to the three levels of high shear stress for short exposure time. The shedding of platelet receptor GPIIb/IIIa and GPVI and their associated aggregation were examined. The results clearly showed that the shedding of the platelet receptor GPIIb/IIIa and GPVI occurred in the sheared blood samples with high shear stress for a short exposure time. It was found that both the platelet aggregations induced by ristocetin and collagen decreased in the sheared blood samples. Both the degree in the shear-induced shedding of the platelet receptor GPIIb/IIIa and GPVI increased with increasing the shear stress level and exposure time. In contrast, the platelet aggregation associated with these two platelet receptors decreased with increasing the shear stress level and exposure time.

Since the increased bleeding was reported to be associated with CF-VADs [10], many suggestions had been offered to explain this clinical observation, such as overuse of anticoagulation therapy, loss of large vWF multimers and GI tract angiodysplasia formation [5,36,37]. However, the hemorrhagic events was a complex processes including many pathological mechanisms, in which the causation is still unclear. Based on the results of the present study, we believe that the non-physiological shear stress damage the integrity of platelets, especially the shedding of platelet receptors, leading to platelet dysfunction and inability of adhesion and aggregation to vWF and collagen. The platelet receptor GPIIb/IIIa and GPVI are two key receptors for hemostasis. When a blood vessel is injured, vWF and collagen of injured endothelium tissue are exposed to the blood whereas the binding between GPIIb/IIIa

with vWF and adhesion connection between GPVI with collagen initiate the platelet adhesion and aggregation process. In our study, two approaches had been used to investigate the shedding of the platelet receptor GPIIb/IIIa and GPVI. One was the flow cytometry test to study the percentage of receptor expression in platelets surface. The other was the platelet aggregation test. The data obtained using these two approaches exhibited that the shedding of GPIIb/IIIa and GPVI occurred under high shear stress and short exposure time. Interestingly, it was found that, even in such short exposure time (0.05 s and 0.5 s), if the shear stress was higher enough, the platelet receptor GPIIb/IIIa and GPVI could be shed. In patients implanted with CF-VADs, because of the continued circulation, the platelets would pass through the non-physiological shear region frequently in the high speed shear-inducing rotating pumps. The shedding of platelet receptors GPIIb/IIIa and GPVI should be enhanced. Therefore, the platelet receptor shedding which would lead platelet dysfunction should be carefully examined in the bleeding events in patients implanted with CF-VADs.

Bleeding is a very dangerous clinical pathological complication, which could be induced by many factors. Only the in vitro experiment is not strong enough to make the conclusion that bleeding is related with receptor shedding induced by non-physiological high shear stress. In our future studies, some in vivo animal experiments would be performed to investigate the influence of the combination with non-physiological high shear stress and anticoagulant drugs on the platelet adhesion, aggregation and hemostasis.

## Conclusion

It was proven that the platelet receptors GPIIb/IIIa and GPVI could be shed by non-physiological high shear stress for short exposure conditions. These sheared platelets exhibited an impaired aggregation capacity of platelets in response to ristocetin and collagen stimulation. The shear-induced shedding of the two key platelet receptors may offer a new perspective to explain the reason of increased bleeding events in patient implanted with those high shear CF-VADs.

## Conflict of interest statement

The authors declared that there are no conflicts of interests.

## Acknowledgements

This work was partially supported by the National Institutes of Health (Grant number: R01 HL 088100).

## References

- [1] Go AS, Mozaffarian D, Roger VL, Benjamin EJ, Berry JD, Blaha MJ, et al. Heart disease and stroke statistics–2014 update: a report from the American Heart Association. *Circulation* 2014;129:e28–292.
- [2] Slaughter MS, Rogers JG, Milano CA, Russell SD, Conte JV, Feldman D, et al. Advanced heart failure treated with continuous-flow left ventricular assist device. *N Engl J Med* 2009;361:2241–51.
- [3] Martin J, Friesewinkel O, Benk C, Sorg S, Schultz S, Beyersdorf F. Improved durability of the HeartMate XVE left ventricular assist device provides safe mechanical support up to 1 year but is associated with high risk of device failure in the second year. *J Heart Lung Transplant* 2006;25:384–90.
- [4] John R, Kamdar F, Liao K, Colvin-Adams M, Boyle A, Joyce L. Improved survival and decreasing incidence of adverse events with the HeartMate II left ventricular assist device as bridge-to-transplant therapy. *Ann Thorac Surg* 2008;86:1227–35.
- [5] Suarez J, Patel CB, Felker GM, Becker R, Hernandez AF, Rogers JG. Mechanisms of bleeding and approach to patients with axial-flow left ventricular assist devices. *Circ Heart Fail* 2011;4:779–84.
- [6] Eckman PM, John R. Bleeding and thrombosis in patients with continuous-flow ventricular assist devices. *Circulation* 2012;125:3038–47.
- [7] Boyle AJ, Russell SD, Teuteberg JJ, Slaughter MS, Moazami N, Pagani FD, et al. Low thromboembolism and pump thrombosis with the HeartMate II left ventricular assist device: analysis of outpatient anti-coagulation. *J Heart Lung Transplant* 2009;28:881–7.
- [8] Bruckner BA, DiBardino DJ, Ning Q, Adeboyeun A, Mahmoud K, Valdes J, et al. High incidence of thromboembolic events in left ventricular assist device patients treated with recombinant activated factor VII. *J Heart Lung Transplant* 2009;28:785–90.

- [9] John R, Kamdar F, Liao K, Colvin-Adams M, Miller L, Joyce L, et al. Low thromboembolic risk for patients with the Heartmate II left ventricular assist device. *J Thorac Cardiovasc Surg* 2008;136:1318–23.
- [10] Crow S, John R, Boyle A, Shumway S, Liao K, Colvin-Adams M, et al. Gastrointestinal bleeding rates in recipients of nonpulsatile and pulsatile left ventricular assist devices. *J Thorac Cardiovasc Surg* 2009;137:208–15.
- [11] Kasirajan V, McCarthy PM, Hoercher KJ, Starling RC, Young JB, Banbury MK, et al. Clinical experience with long-term use of implantable left ventricular assist devices: indications, implantation, and outcomes. *Semin Thorac Cardiovasc Surg* 2000;12(3): 229–37.
- [12] Loo G, Gonzalez-Stawinski G. Pulsatile vs. continuous flow in ventricular assist device therapy. *Best Pract Res Clin Anaesthesiol* 2012;26(2):105–15.
- [13] Karmonik C, Partovi S, Schmack B, Weymann A, Loebe M, Noon GP, et al. Comparison of hemodynamics in the ascending aorta between pulsatile and continuous flow left ventricular assist devices using computational fluid dynamics based on computed tomography images. *Artif Organs* 2014;38:142–8.
- [14] Avrahami I, Rosenfeld M, Einar S. The hemodynamics of the Berlin pulsatile VAD and the role of its MHV configuration. *Ann Biomed Eng* 2006;34:1373–88.
- [15] Deutsch S, Tarbell JM, Manning KB, Rosenberg G, Fontaine AA. Experimental fluid mechanics of pulsatile artificial blood pumps. *Annu Rev Fluid Mech* 2006;38:65–86.
- [16] Fraser KH, Zhang T, Taskin ME, Griffith BP, Wu ZJ. A quantitative comparison of mechanical blood damage parameters in rotary ventricular assist devices: shear stress, exposure time and hemolysis index. *J Biomech Eng* 2012;134:081002.
- [17] Stern DR, Kazam J, Edwards P, Maybaum S, Bello RA, D'Alessandro DA, et al. Increased incidence of gastrointestinal bleeding following implantation of the HeartMate II LVAD. *J Card Surg* 2010;25:352–6.
- [18] Anderson JB, Wood HG, Allaire PE, McDaniel JC, Olsen DB, Bearnson G. Numerical studies of blood shear and washing in a continuous flow ventricular assist device. *ASAIO J* 2000;46:486–94.
- [19] Song X, Throckmorton AL, Wood HG, Antaki JF, Olsen DB. Quantitative evaluation of blood damage in a centrifugal VAD by computational fluid dynamics. *J Fluids Eng* 2004;126:410–8.
- [20] Song X, Untaroiu A, Wood HG, Allaire PE, Throckmorton AL, Day SW, et al. Design and transient computational fluid dynamics study of a continuous axial flow ventricular assist device. *ASAIO J* 2004;50:215–24.
- [21] Furie B, Furie BC. Mechanisms of thrombus formation. *N Engl J Med* 2008;359:938–49.
- [22] Moroi M, Jung SM, Nomura S, Sekiguchi S, Ordinas A, Diaz-Ricart M. Analysis of the involvement of the von Willebrand factor glycoprotein Ib interaction in platelet adhesion to a collagen-coated surface under flow conditions. *Blood* 1997;90:4413–24.
- [23] Andrews RK, Gardiner EE, Shen Y, Whisstock JC, Berndt MC. Glycoprotein Ib-IX-V. *Int J Biochem Cell Biol* 2003;35:1170–4.
- [24] Nesbitt WS, Giuliano S, Kulkarni S, Doppeide SM, Harper IS, Jackson SP. Intercellular calcium communication regulates platelet aggregation and thrombus growth. *J Cell Biol* 2003;160:1151–61.
- [25] Nesbitt WS, Kulkarni S, Giuliano S, Goncalves I, Doppeide SM, Yap CL, et al. Distinct glycoprotein Ib/V/IX and integrin alpha IIb beta 3-dependent calcium signals cooperatively regulate platelet adhesion under flow. *J Biol Chem* 2002;277:2965–72.
- [26] Andrews RK, Karunakaran D, Gardiner EE, Berndt MC. Platelet receptor proteolysis A mechanism for downregulating platelet reactivity. *Arterioscler Thromb Vasc Biol* 2007;27:1511–20.
- [27] Al-Tamimi M, Tan CW, Qiao J, Pennings GJ, Javadzadegan A, Yong ASC, et al. Pathologic shear triggers shedding of vascular receptors: a novel mechanism for down-regulation of platelet glycoprotein VI in stenosed coronary vessels. *Blood* 2012; 119:4311–20.
- [28] Cheng H, Yan R, Li S, Yuan Y, Liu J, Ruan C, et al. Shear-induced interaction of platelets with von Willebrand factor results in glycoprotein Ibx shedding. *Am J Physiol Heart Circ Physiol* 2009;297:H2128–35.
- [29] Taskin ME, Fraser KH, Zhang T, Wu C, Griffith BP, Wu ZJ. Evaluation of Eulerian and Lagrangian models for hemolysis estimation. *ASAIO J* 2012;58:363–72.
- [30] Hu J, Mondal NK, Sorensen EN, Cai L, Fang H-B, Griffith BP, et al. Platelet glycoprotein Ibx ectodomain shedding and non-surgical bleeding in heart failure patients supported by continuous-flow left ventricular assist devices. *J Heart Lung Transplant* 2014;33:71–9.
- [31] Arthur JF, Dunkley S, Andrews RK. Platelet glycoprotein VI-related clinical defects. *Br J Haematol* 2007;139:363–72.
- [32] Nieswandt B, Schulte V, Bergmeier W, Mokhtari-Nejad R, Rackebrandt K, Cazenave J-P, et al. Long-term antithrombotic protection by in vivo depletion of platelet glycoprotein VI in mice. *J Exp Med* 2001;193:459–70.
- [33] Zhang T, Taskin ME, Fang HB, Pampori A, Jarvik R, Griffith BP, et al. Study of Flow-Induced Hemolysis Using Novel Couette-Type Blood-Shearing Devices. *Artif Organs* 2011;35:1180–6.
- [34] Leverett LB, Hellums JD, Alfrey CP, Lynch EC. Red blood cell damage by shear stress. *Biophys J* 1972;12:257–73.
- [35] Ding J, Chen ZS, Niu SQ, Zhang JF, Mondal NK, Griffith BP, et al. Quantification of Shear-Induced Platelet Activation: High Shear Stresses for Short Exposure Time. *Artif Organs* 2015 [in press].
- [36] Geisen U, Heilmann C, Beyersdorf F, Benk C, Berchtold-Herz M, Schlensak C, et al. Non-surgical bleeding in patients with ventricular assist devices could be explained by acquired von Willebrand disease. *Eur J Cardiothorac Surg* 2008;33:679–84.
- [37] Meyer AL, Malehsa D, Bara C, Budde U, Slaughter MS, Haverich A, et al. Acquired von Willebrand syndrome in patients with an axial flow left ventricular assist device. *Circ Heart Fail* 2010;3:675–81.